

View this email in your browser



Supported using public funding by
**ARTS COUNCIL
ENGLAND**

**York
Museums
Trust**

Latest news for week ending Friday 11 March 2022

In this Issue

Dear <<First Name>>

Welcome to the latest batch of fresh news from Museum Development Yorkshire. It's March already - where did February go? There are lots of signs of Spring, longer days, birds singing and the spring bulbs starting to show.

We are coming up to two years from the start of the first Covid lockdown and the start of [MDY Elevenes](#). Over the next two weeks we are looking at the Legacies of Colonialism and Slavery in the region's collections and also the results of the regional museums survey and how you can use them in your museum.

There is still time to sign up for the [South Yorkshire Museums Forum](#) which is a great opportunity to see the Danum Museum at Doncaster and learn about this new museum project while networking with museum colleagues.

We are now taking bookings for [Everyday Innovation](#), which is one of the most popular courses we have ever run - so don't delay if you want to take part. There are also a few places left on the [Collections Inventory training](#) if you hurry.

We have [a great short film about the work Rotherham Museum have been doing](#) in partnership with a local artist looking at anxiety and mental health in young people.

- [News & Notices](#)
- [Your Fortnight Ahead](#)
- [What's On?](#)
- [Dates for Diaries](#)
- [Your Wellbeing](#)
- [Job Opportunities](#)
- [Your Development](#)
- [Funding](#)
- [And Relax...!](#)
- [Previously...](#)
- [Contacts](#)

Contributions

Events Listings

Subscribe

birds herons on twitter and news of an alien invasion.

AB

News and Notices

AIM National Conference 2022 Apply now - 2 fully funded places!

Port Sunlight Village 16 – 17 June

The conference theme of 'Making it happen' will see colleagues from across the UK explore the vision for independent museums as we recover from the challenges of the pandemic. As well as presentations full of useful advice and discussion, there will be strategic updates from governments and funders, and social events.

MDY are offering two fully funded tickets for the conference, including travel and accommodation.

We encourage anyone working or volunteering in a museum (both independent and local authority) to apply. This is open to museums that are Accredited or officially recognised as Working Towards in Yorkshire and the Humber BUT not National Portfolio Organisations. Both applicants will be supported by the MDY team throughout the conference. It is a fabulous opportunity, DON'T MISS OUT, APPLY TODAY!

[Complete the application form by clicking here.](#)

Closing date: 28 March.

Find out more about the conference:
aim-museums.co.uk/aim-national-conference-2022.

Two Exciting British Art Network (BAN) Opportunities:

BAN / YCBA Curatorial Forum in New Haven, Connecticut

Applications are open for a residential week-long Curatorial Forum to take place in New Haven, Connecticut, the week of 17 October 2022, organised in partnership between the Yale Center for British Art (YCBA) and the British Art Network (BAN).

Find out more at:
britishartnetwork.org.uk/ban-ycba-curatorial-forum-october-2022.

BAN Seminar Support

Applications are open for funding of up to £1,000 to support a workshop or seminar, to be held between May and October 2022.

Find out more at: britishartnetwork.org.uk/british-art-network-seminar-support.

Deadline: 12.00pm on 21 March.

Please feel free to contact the BAN team directly, should you have any questions about either of these opportunities:
britishartnetwork.org.uk/about-ban/ban-team.

New Museums and Galleries Exhibition Tax Relief (MGETR) Support Service

The Arts Council's new MGETR Support Service is designed to enable more organisations to benefit from this relief. The support service pack will help address some of the common questions and misconceptions associated with the tax relief, as well as providing a straightforward, step-by-step guide to preparing and making a claim.

MGETR is an important source of additional funds that is applicable to a large number of arts and cultural organisations. Up to 40p in each £ could be claimed as cash-based support to invest in your organisation's ambitions.

In addition to the new guide, which can be downloaded via the link below, companies based in England can also benefit from a new helpdesk service, which will provide them with direct access to expert guidance from RSM, who are delivering this service for the Arts Council.

Find out more at:
www.artscouncil.org.uk/supporting-arts-museums-and-libraries/museums-and-galleries-exhibition-tax-relief.



Results From the Annual Museum Survey 2021

MDY has now published a report on the impact of the pandemic on the region's museums, highlighting the significant differences in how this impact has been felt across the sector depending on factors such as the region in which a museum is located or whether it is based in an urban or rural setting. Running since 2018, The Annual Museum Survey 2021 compares data with previous years to understand the depth of this impact. For Yorkshire there were significant strengths in securing investment for recovery but many of our museums had to remain closed for greater

A copy of the national report is available at:

southwestmuseums.org.uk/what-we-do/consultancy/annual-museum-survey-2021,

and the Yorkshire data is at: infogram.com/ams-2021-yorkshire-and-the-humber-1hd12yxpdgrox6k?live.

If your museum would like MDY to work with you using this data, please get in touch with [your local MDO](#), or join us at our special Elevenses session on Wednesday 23 March (see below).

Your Fortnight Ahead

Accreditation Workshops from MDY:

15 March, Middleton Railway

Introduction to the Museum Accreditation Scheme UK 9.30am – 11.00am

For non-accredited museums who are considering applying to Museum Accreditation, to find what the scheme entails and whether it is suitable for your organisation. Also suitable for museums currently recognised as Working Towards Accreditation as an opportunity for other staff and volunteers to find out more about the scheme.

Book here: www.eventbrite.com/e/260914160277.

Accreditation Mentor Workshop 11.30am – 3.30pm

A thorough overview of what the role involves and how to get the most from your mentoring experience. Includes how to conduct an effective annual review with your mentee museum, demystify the mentor's report, discuss challenging situations and where to seek additional support.

Book here: www.eventbrite.com/e/260922174247.

Accreditation mentors who would also like to refresh their knowledge of the scheme are welcome to attend both workshops.

Elevenses with MDY:

Wednesday 16 March Addressing the legacies of colonialism and slavery

How do we develop and use research which helps us understand collections and historic sites in honest and more inclusive ways? We'll be talking to curators about links between museums, the former colonies of the British Empire, slavery and the

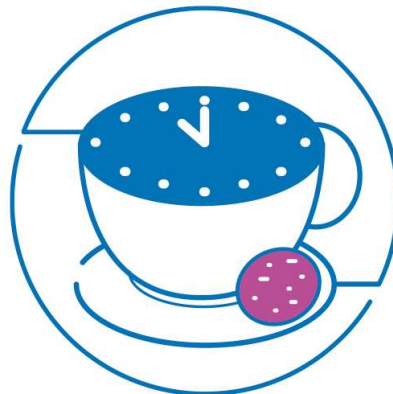
Wednesday 23 March Using the data from the Museum Development Annual Museums Survey

We share key results from the Yorkshire & Humber region for the Museum Development Annual Museums Survey 2020-21, and chat about how you can use the results to benchmark your own museum. Not sure how to use the data or what's in it for you? Join us to find out.

Check the full Elevenses schedule and find joining links at:

www.museumdevelopmentyorkshire.org.uk/event-category/elevenses-with-mdy.

If there is a topic you'd like to talk about or hear about at Elevenses, or even a speaker you'd like to hear from, please let us know at:
joanne.bartholomew@ymt.org.uk.



Regional Museum Forums 2022

Join us for 'a professional day out': a chance to catch up with your museum colleagues in the region, visit an interesting venue, get the most out of being at a site, hear some interesting case studies – and really enjoy being out, in a different museum, with different colleagues!

Forums usually start with tea and coffee from 10.00am and introductions from 10.30am. A delicious, complimentary lunch is provided – currently pre-wrapped in individual portions - followed by afternoon refreshments. Meetings usually finish around 3.30pm - 4.00pm.

Mon 21 March - South Yorkshire Danum Gallery, Library and Museum

www.museumdevelopmentyorkshire.org.uk/event/south-yorkshire-museum-forum-3.

Thu 31 March - North Yorkshire Kiplin Hall and Gardens, near Richmond

www.museumdevelopmentyorkshire.org.uk/event/north-yorkshire-museum-forum-3.

The dates for all forum meetings can be found at:

www.museumdevelopmentyorkshire.org.uk/event-category/regional-forum-meetings.



Collections Documentation – Inventory

only 4 places left!

**24 March, 2.00pm - 4.00pm
Online**



This session will explore the planning and documentation involved in an Inventory project, using the Spectrum 5.0 Inventory procedure as a framework.

What should your policy say about Inventory? What information do you need to meet the requirements for the Inventory procedure? How can you create a plan to address backlogs? How can you fill in your information gaps? There will be opportunities to discuss with colleagues, ask questions throughout and send questions in advance.

Find out more and book a place at: www.eventbrite.co.uk/e/collections-documentation-inventory-tickets-227734970427.

Dynamic Collections and Kick the Dust

How young people are shaping collections, and the organisational change making it happen

Friday 25 March, 11.00am - 12.30pm via Zoom

The British Museum National Programmes team are excited to be hosting this free online event in collaboration with the National Lottery Heritage Fund, discussing young people, collections and the process of making change.

More info and ticket booking at:

www.npconference.uk/dynamic-collections-and-kick-the-dust.

What's Happening in Your Region?

Anxiety: Short Film and Case Study

Watch this short film to find out more about the exciting project, Rotherham: a Relational Space, based at Clifton Park Museum in Rotherham led by artist Leigh de Vries.



Link to film: vimeo.com/671907999.

We Want to Hear From You!

If you have an exhibition, event or some special news do get in touch. We're interested and would love to tell everyone in the region too!

Email: mdy-bulletin@ymt.org.uk.

Dates for Your Diary

Eleveneses with MDY - coming up

Tuesday 29 March

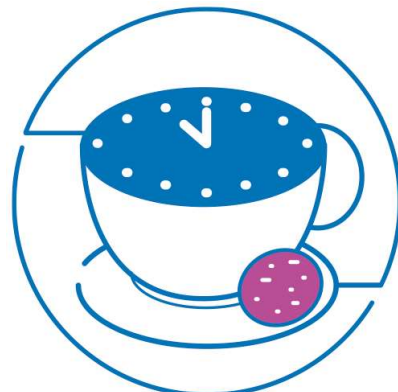
Why employ an apprentice? And other steps towards inclusive recruitment

We talk to Melanie Shee from Creative & Cultural Skills about how they can help you to develop more diverse and inclusive employment practices, and we learn more about apprenticeships in museums – what an apprenticeship is and isn't, and how to set one up.

Check the full Eleveneses schedule and find joining links at:

www.museumdevelopmentyorkshire.org.uk/event-category/elevenses-with-mdy.

If there is a topic you'd like to talk about or hear about at Eleveneses, or even a speaker you'd like to hear from, please let us know at:
joanne.bartholomew@ymt.org.uk.



Your Wellbeing

Mindful March from Action for Happiness

Mindfulness can help us respond more calmly, even in dark times. With war returning to Europe, many of us are experiencing a complex mix of emotions, including fear and sadness as well as compassion and hope. This month Action for Happiness are encouraging you to pause, breathe and find ways to live more mindfully. Inner peace can contribute to outer peace too.

The Mindful March calendar is full of ideas to help you live with awareness and kindness this month. Please print it, use it and share it too:

actionforhappiness.org/calendar.



You can also check out their Top Tips for Mindful March video at:

www.youtube.com/watch?v=KjvkiEmHon4.

Job Opportunities and Volunteering

Yorkshire Cricket Foundation Heritage Manager

Competitive salary and benefits

We are looking for a dynamic Heritage Manager, reporting to the Managing Director, based at Headingley Stadium but will involve travel work across the county.

The successful applicant will have a proven track record of working in a heritage environment and a keen interest in sport. They will have superb communications and public relations skills, helping to promote awareness of Yorkshire Cricket history and heritage and also increasing the reach of the charity in the community.

Find out more at:

yorkshirecricketfoundation.com/news/view/1227/vacancy-heritage-manager.

Arts and Heritage (A&H) Recruiting New Trustees

Can you help us forge connections between artists, communities, historic sites and museums, to challenge how heritage narratives are explored? Arts&Heritage is looking to recruit new Trustees to join its Board. We are looking for people who have skills, experience or knowledge in one, or more, of the following areas:

- Finance and Fundraising
- Artistic Practice
- Curators and Gallery Professionals
- Diversification
- Marketing
- Legal

Find out more at:

www.artsandheritage.org.uk/2022/02/03/ah-are-recruiting-new-trustees-to-join-our-board.

Deadline: 5.00pm on Friday 11 March.

York Museums Trust Visitor Experience Team Members

Starting salary: £17,190 – £18,328 pro rata depending on hours (various shift patterns)

We have a number of exciting opportunities to work at either the Yorkshire Museum, York Castle Museum or York Art Gallery as a Visitor Experience Team Member. We are seeking warm and friendly individuals to join our team who create a welcoming and engaging experience for all our visitors as we reopen our sites.

Find out more at:

www.yorkmuseumstrust.org.uk/about-us/our-people/jobvacancies.

We will be shortlisting and interviewing to fill positions as applications are received and the vacancy will close when all the positions are filled so please do not delay in applying. Each role will start as soon as possible.

Woodmeadow Trust, nr York Education Officer

**Salary: £28,860 to £30,784 (pro-rata)
Part-time (16 hrs pw for 39 wks (term-time))**

and deliver inspiring educational activities that promote an understanding of ecology and biodiversity. We are looking for an outgoing, enthusiastic educator with great communication skills, with at least one year's experience of delivering environmental education activities with a good knowledge of ecology, UK wildlife, habitats and the national curriculum. Experience of working with children aged 11-18 as well as primary school age is desirable.

Find out more at:

www.woodmeadowtrust.org.uk/DB/news-items/were-recruiting-an-education-officer-2.

Deadline: midnight on Sunday 13 March.

Malton Museum CIO Chair Vacancy

At a pivotal time for Malton Museum, the Board of Trustees is looking for a new Chair who will provide leadership to the trustees in forming new strategies for the museum as a whole and act as ambassador in developing relationships with key stakeholders. The aim is to support a vibrant community facility which highlights our exceptional local heritage, thereby making a positive contribution to the vitality of Malton town centre.

We are looking for an outstanding leader and influencer as our Chair, who can help take the museum to a new level of engagement and operational effectiveness.

Find out more at:

www.maltonmuseum.co.uk/news/malton-museum-cio-chair-vacancy.

Deadline: 20 March.

Epworth Old Rectory Administrator

£10.00 ph, 7 hrs pw

Epworth Old Rectory is the former home of the Wesley family, the founders of the worldwide Methodist movement. It offers inspiration and learning for all people, with particular significance for Christians as a place of pilgrimage. In response to the challenges of the pandemic we are seeking to broaden our range of audiences, offering transformative and inclusive visitor experiences (both physical and virtual) and ensuring that this beautiful Grade I Listed building can meet the needs of 21st century visitors. We are therefore looking to recruit someone experienced in office administration - you will be responsible for day-to-day financial matters, updating of records, correspondence, and public enquiries.

Find out more at:

epwortholdrectory.org.uk/epworth-old-rectory-old/support/volunteering.

Interview date: Monday 28 March.

Thackray Museum of Medicine Community Co-Producer

Salary: £24,500

You will help us to share the museum with local people – its displays, collection and resources – to ensure it is a meaningful, co-created local asset. Harehills is one of the most diverse and dynamic wards in the city and we are proud to have worked with local people to create our new galleries. We want to continue getting to know our neighbours in Harehills and St James's Hospital and develop more programmes and exhibitions with and for them. Our ambition is to create lasting links by including local people in important decisions about the work we do – about what the museum collects and does with those collections, for example.

Find out more at: thackraymuseum.co.uk/about-us/work-for-us.

Deadline: 5.00pm on 5 April.

Your Development

Everyday Innovation – Spring 2022 2-day development programme

**Wed 27 April and Thu 12 May
University of York**



This specially designed development programme, to support museums to implement innovative thinking and behaviours across their organisation, is being delivered over 2 full days and is our first opportunity for face-to-face delivery of this training since October 2019.

Our trainer, Dr Jo North, is a leading expert in innovative thinking. She is experienced at working with organisations large and small, nationally and internationally. Through Everyday Innovation, your museum will access her expertise and advice. Your museum will also receive online mentoring from her to help you apply the training.

We explore:

- Why a culture of everyday innovation is essential for your organisation's resilience
- What leaders and teams can do to facilitate a more innovative culture
- How to shape your business model to better facilitate innovation

business model.

What our previous participants said:

'This fascinating and engaging course challenged us to think differently and alter our perspectives. The techniques can be used to deliver innovation in a strategic way but also to make incremental changes. The course offered time to be creative, be inspired by colleagues and to learn usable techniques.'

'Phenomenal facilitator. Genuinely concerned about our further development, full of encouragement and humour.'

'Totally in command of her subject and very good at presenting it.'

Find out more and book your place now at:

www.eventbrite.co.uk/e/everyday-innovation-spring-2022-tickets-293677054977.

Rural Voices The Rural Museums Network Seminar Series

11 March, 8 April, 13 May (via Zoom)

Join us for these monthly seminars to hear expert speakers and museum professionals share how rural collections and rural sites can better include a wider range of voices in the stories they tell.

Friday 11 March, 3.00pm - 4.15pm

Digging Deeper: Telling the Stories of Rural LGBTQ+ Lives

ddrural-lgbtq-lives.eventbrite.co.uk

Friday 8 April, 3.00pm - 4.15pm

Virtual Volunteering

ruralvirtualvolunteering.eventbrite.co.uk.

Friday 13 May, 3.00pm - 4.15pm

Digging Deeper: Representing Gypsy, Roma and Travelling Communities in Rural Museums

ddrepresentinggtrcommunities.eventbrite.co.uk.

Microsoft Educator Fundamentals for Digital Learning

ExpertTrack Course from FutureLearn

Technology is transforming education. The shift from traditional and static teaching to dynamic digital learning is helping to create engaging educational experiences that extend far beyond the classroom.

create not just an effective learning environment, but one that successfully responds to individual learner needs.

www.futurelearn.com/experttracks/microsoft-educator-fundamentals.

Free Webinars from The Audience Agency

Respect! Making Audiences' Views Matter Wednesday 16 March, 1.00pm - 4.30pm

This half-day training session offers a practical guide to collecting audience survey data with respect and purpose. This session is all about helping you to survey brilliantly. Reap all the benefits while minimising the pain.

www.theaudienceagency.org/events/free-skillset-webinar-respect-making-audiences-views-matter.

Experience Design for Audience Development Tuesday 29 March, 1.00pm - 3.00pm

Using a methodology based on design thinking, developed through the Adeste+ project, we demonstrate how to develop both existing and future audiences by focusing on their experience.

www.theaudienceagency.org/events/experience-design-for-audience-development.

National Arts Fundraising School

If you're looking for a fast, focused learning opportunity soon, then our hybrid School in May is your perfect match. Over 5 days residential, plus online coaching, we'll help you develop a strategic approach to funding sustainability. We'll coach you personally in the skills you need to approach trusts, businesses, HNWI and more in an engaging way. But May is only 6 weeks away, so act now to secure your place. (Now only 8 left.)

Prefer a slower pace to build sustainable relationships? The fully Online School offers you maximum flexibility. It runs 1.5 days a week over 5 weeks in June and July – and you can join from your home or workplace. So you've time to do your day job and learn how to connect to philanthropic individuals, trusts and foundations, and corporates.

Find out more and guarantee your place now in three simple steps:

www.nationalartsfundraisingschool.com.

GEM Training and Support Grants 2022 Up to £500*

We would like to support our GEM Yorkshire and Humberside members as we rebuild our organisations and reshape and refocus our priorities in these post-pandemic days. For museums and galleries across the region to be proactive post-Brexit and Covid, to be sustainable, inclusive and relevant to their audiences, we recognise the increased need for training, coaching and mentoring.

We are inviting applications to fund training, mentoring, coaching or other professional development opportunities that will help you to develop the skills and knowledge needed in our sector now. Applications are open to employees and freelance practitioners who are GEM members.

Application requirements

We don't want our application process to be a barrier, so in the first instance, please apply by email responding to the following questions:

- What do you want to do and why?
- How is it going to help you, your organisation and the wider sector?
- How are you going to share what you learn with others?
- How much do you need? – please provide a detailed itemised budget breakdown to include expenses.

Successful applicants will need to create a post training report/Blog for GEM and commit to presenting any learning at a future GEM sharing event.

Please email your applications to both of the following contacts, Diane Saxon diane@the-arthouse.org.uk and Kate Fellows kate.fellows@leeds.gov.uk.

Deadline: 5.00pm on Weds 20 April.**

We will let you know whether you have been successful by Friday 29 April and follow this up with a development call to discuss your plans and confirm your start date.

**More possible if justifiable, please discuss before applying **If you want to apply for training or support happening before the deadline please contact us to discuss.*

Everyday Heritage Grants: Celebrating Working Class Histories

Historic England has announced new pilot grants for community-led and people-focused projects that aim to further the nation's collective understanding of the past.

These grants will focus on heritage that links people to overlooked historic places, with a particular interest in recognising and celebrating working class histories. Successful applications, from community or heritage organisations, will receive grants up to £25,000 to fund projects.

Find out more at:

Deadline: Monday 23 May.

And Relax...!

Alan's Nature Notes...

Exotic visitors coming to stay

Last winter you may remember I spotted a Little Egret flying over our garden looking for a place to roost. Here you can see they are back sitting in the Hawthorn at the end of our garden. Maybe having a quick look at our tin bath and washing up bowl ponds and deciding that they aren't worth further investigation. If you are interested in the heron family there is a great website www.everyheron.com and twitter account [@every_heron](https://twitter.com/every_heron).



I have also been having some even more exotic visitors, though with more mixed feelings... the Little Egrets have made their own way here, not so the Ring Necked Parakeets. They established themselves in Southern England following various escapes and releases of pet birds. There are a number of stories of how they got in to the wild including sadly [apocryphal stories involving Jimi Hendrix](#) and the [filming of the African Queen](#) starring Humphrey Bogart and Katharine Hepburn. The population in the North West is a separate population from more recent escapes and releases. It was quite a small population based around parks near the city centre but they are now making their way out to the suburbs and have started to appear where I live - south of Stockport, around 10 miles from central Manchester. It is exciting to see such good looking creatures around the place but I also feel they shouldn't really be here [competing so successfully with native species](#). However, at the moment [the RSPB](#) don't think a cull is necessary.

Previously...

In case you missed it...

Just in case you missed them first time round, we're listing below snippets of some of the articles published in previous ebulletins that we think you might still find useful:

New Covid Secure Reopening Advice from MDY

Briefing sheets:

- www.museumdevelopmentyorkshire.org.uk/2021/04/22/new-mdy-covid-secure-reopening-guidance.

Other Reopening Resources and Guidance:

- Updated DCMS Guidance on Volunteering:
www.gov.uk/guidance/enabling-safe-and-effective-volunteering-during-coronavirus-covid-19.
- Working Safely During Coronavirus - Government Advice
www.gov.uk/guidance/working-safely-during-coronavirus-covid-19/the-visitor-economy.
- NMDC good practice guide on reopening Museums
www.nationalmuseums.org.uk/coronavirus-update/nmdc-good-practice-guidelines-opening-museums.
- AIM and Museum Development Network 'Reopening Checklist'
www.aim-museums.co.uk/museum-reopening-guidance-checklist.
- EMBED – Reopening Recommendation Guidance focused on Accessibility
embed.org.uk/covid-19-reopening.
- Space for Learning - New Guidance for Learning Services
spaceforlearning.org.uk/covid-guidance.
- Timed Ticketing - Quick Guide
[Download a PDF copy of the guide](#).

Other Previous Articles:

- Mental Health - Directory of Online Courses
www.futurelearn.com/courses/collections/support-mental-health-in-lockdown
- Museum Wellness Network:
supporting staff wellbeing post-lockdown:
www.museumsassociation.org/museum-practice/08062020-supporting-museum-workforce-wellbeing-post-lockdown.

Contributions

(on Friday 25 March) to: mdy-bulletin@ymt.org.uk
by 5.00pm on Wednesday 23 March.

Contacts

The Museum Development Yorkshire Team

Michael Turnpenny

Head of Museum Development

Email: michael.turnpenny@ymt.org.uk

Tel: 07917 220227

Alan Bentley

Museum Development Officer (West Yorkshire, Harrogate and Craven)

Email: alan.bentley@ymt.org.uk

Tel: 07595 609782

Liz Denton

Museum Development Officer (East Riding of Yorkshire and Northern Lincolnshire)

Email: liz.denton@ymt.org.uk

Tel: 07785 458220

Dieter Hopkin

Museum Development Officer (Moors and Coast, Dales and York)

Email: dieter.hopkin@ymt.org.uk

Tel: 07970 977217

Joanne Bartholomew

Museum Development Officer

Email: Joanne.Bartholomew@ymt.org.uk

Tel: 07730 642919

Alice Macpherson

Museum Development Yorkshire Intern

Email: alice.macpherson@ymt.org.uk

Ali Glew

MDY Ebulletin Editor

Email: mdy-bulletin@ymt.org.uk

Tel: 0773 258 5959

Kelly Chapman

Regional Accreditation Advisor

kelly.chapman@ymt.org.uk

Please note Kelly works on Monday only. If your enquiry is more urgent, please contact one of the MDY team.

If you're unsure which of our team to contact, please email mdyoffice@ymt.org.uk and your message will be forwarded to the correct person.

Spread the word

Encourage others in your organisation to receive the MDY Bulletin directly by [subscribing here](#).

Find out more

Check out our website at: www.museumdevelopmentyorkshire.org.uk.

Follow us

We're on Twitter [@MusDevYorks](https://twitter.com/MusDevYorks).



Supported using public funding by
**ARTS COUNCIL
ENGLAND**

Copyright © 2022 Museum Development Yorkshire, All rights reserved.

Want to change how you receive these emails?
You can [update your preferences](#) or [unsubscribe from this list](#).

This email was sent to <<Email Address>>

[why did I get this?](#) [unsubscribe from this list](#) [update subscription preferences](#)

Museum Development Yorkshire · St. Mary's Lodge, · Marygate, · York, YO30 7DR · United Kingdom

