

[Subscribe](#)[Past Issues](#)[Translate ▼](#)[View this email in your browser](#)

York Museums Trust Museum Development Yorkshire

**Latest news for week ending
Friday 31 July 2020**

In this Issue

Dear <<First Name>>

****Submissions for next week's bulletin
should be sent to mdy-bulletin@ymt.org.uk
by 5pm on Wed 5 August****

Hard to believe that this is the last day of July. It has been a tough time for us all but the whole team at MDY wish everyone the best of luck with their plans. We've been delighted to hear good news stories from some museums who have seen visitor numbers exceed their expectations, whilst our Escaping Lockdown grants have supported many others to prepare for a safe reopening. We appreciate that deciding when to reopen is a complex decision for each individual site and one that some of you may not take for a while. Don't forget the MDY team are available - whatever stage you are at. This edition leads with information about the newly launched Culture Recovery Grant schemes. We have also included a range of training opportunities, from professional development through to a focus on your wellbeing.

Finally, do make sure you read down to our new section from Dieter, 'Collectors' and Curators' Curios' – who knew that barley water could generate research...!?

We are still keen to hear your views about our communications. If you have any ideas how we can improve and any changes you would like to see in Eleveses as we prepare to relaunch in September, please email lily.wilks@ymt.org.uk.

Please do keep telling us about your successes and problems - either directly by phone or email or shared at Eleveses. If you're not sure who to email, send to mdyoffice@ymt.org.uk and we will

- News & Notices
- Reopening Resources
- Job Opportunities
- Your Week Ahead
- Your Wellbeing
- Funding Opportunities
- Your Development
- Collectors' Curios
- And Relax...!
- Previously...
- Contacts

Subscribe

[Subscribe](#)[Past Issues](#)[Translate ▼](#)

feedback on our work, to reshape our support in these changing times.

Please check our website regularly for further information and don't forget to follow us on Twitter [@MusDevYorks](#). Please also encourage others in your organisation to subscribe to this bulletin.

News and Notices

As part of the government's £1.57 billion Culture Recovery Fund to support cultural, arts and heritage organisations, two major funding programmes for museums were launched this week.

Arts Council England Culture Recovery Fund: Grants

£500 million is available to support museums which were financially sustainable before Covid-19 but are now at imminent risk of failure, and to ensure that, by March 2021, successful applicants are either fully or partially reopened, or operating on a sustainable, cost efficient basis, so that they are able to reopen at a later date.

All Accredited museums and those Working Towards Accreditation are eligible to apply.

Museums can apply for a minimum of £50,000 to a maximum of £3 million, funding to be spent October 2020 - March 2021, no match funding is required.

Round one opens 10 August, closes for applications 12.00pm on 21 August.

Round two opens 21 August, closes for applications 12.00pm on 4 September.

ACE expect to allocate 75% of the funding in the first round.

The grants will fund:

- costs incurred October 2020 to March 2021 that enable the museum to remain open, reopen or partially reopen
- costs to allow reduction of activity to preserve the museum
- costs to ensure value for money of museum's financial sustainability.

For further details visit: www.artscouncil.org.uk/funding.

Historic England in partnership with National Lottery Heritage Fund

Subscribe	Past Issues	Translate ▼
------------------	--------------------	--------------------

£88 million is available in grants to help heritage organisations or businesses cover operating costs, assess and adapt their business models, and become financially viable. This may include costs of reopening, operating, hibernation, mothballing or recovery costs.

Organisations can apply for a minimum of £10,000 to a maximum of £3 million. Grants must be spent by the end of March 2021.

For further details visit:

historicengland.org.uk/coronavirus/funding/recovery.

Deadline for applications: 12.00pm on 17 August.

Dates for your diary

Yorkshire Industrial Collections Network Brew-up! meetings

Following the success of our initial online network meetings we are planning a further two:

- Wed 26 August, 3.00pm**

Speakers from NCMME presenting on their Humphry Davy exhibition and experiences so far of opening to the public and keeping volunteers engaged during lock-down.

Book a place at: www.eventbrite.co.uk/e/yorkshire-industrial-collections-network-brew-up-tickets-115085854890.

- Wed 16 September, 3.00pm**

Steph Mastoris, Director, National Waterfront Museum, Swansea 'Industrial Collections and Identity'.

Book a place at: www.eventbrite.co.uk/e/yorkshire-industrial-collections-network-brew-up-tickets-115088773620.

We hope that you will be able to join us.

Yorkshire Emerging Museum Professionals (YEMP)

Let's Get Social: Online Meet-up Tue 11 August, 7.00pm - 8.30pm

Join Yorkshire Emerging Museum Professionals for their second online meet-up. In this relaxed chat we will be talking all things social media. So, come and share your

Subscribe

Past Issues

Translate ▼

This session will be led by Yorkshire EMP committee members and is open to any emerging museum professionals from across the Yorkshire region.

To take part, RSVP on Facebook:

www.facebook.com/events/213460439960117.

We're a friendly bunch!

Yorkshire Emerging Museum Professionals (YEMP) is a support network for people keen on establishing their career in museums, heritage and the arts. We share and discuss job openings, training opportunities, best practice and our experiences. The aim is that by coming together to impart our collective knowledge, we all benefit.

What can YEMP do for you?

Email your comments/questions/demands to YorkshireEMP@gmail.com.

Archive Service Accreditation

There is now fuller guidance on how the processes around archive service accreditation are being handled in the light of the COVID-19 shutdown, hosted on The National Archives' website. It can be found at

www.nationalarchives.gov.uk/documents/archives/archive-service-accreditation-and-coronavirus.pdf.

Reopening Resources

MDY recognises that every museum will be making a decision on when to reopen based on their own individual situation, involving a multitude of different factors. We are mindful that museums are at different stages in this process, and resources are aimed at both supporting museums to make an informed choice about reopening, and providing tips and advice to those who continue to evolve their new operations as staff, volunteers and visitors return to on site.

Reopening Support: Planning to Reopen Collections Care Considerations

**Wed 12 August, 3.00pm – 4.30pm
via MS Teams**

This is one of a series of sessions that will support your skills and knowledge to apply COVID-secure guidelines to collections care as your museum re-opens or plans to re-open.

The training is aimed at museum staff or volunteers with responsibility for public exhibition spaces and storage areas as part of collections management and care roles.

Subscribe	Past Issues	We will be basing this session on material developed by the experienced conservator	Translate ▼
		<p>Libby Finney, Regional Collection Care Facilitator of the Museum of London, to examine the broad practical issues involved. MDY staff with collections and Museum Accreditation will co-host the session.</p> <p>There will be an opportunity for a Q&A session at the end of the presentation. However, if you have questions which you would like to post in advance please send them by 10 August to dieter.hopkin@ymt.org.uk.</p> <p>To attend this session please book on Eventbrite: www.eventbrite.co.uk/e/re-opening-support-caring-for-collections-tickets-113605252368.</p> <p><i>NB. This session will not include general issues of social distancing, cleaning, visitor experience, cafes, shops or toilets, as these were covered in the sessions on 15 July and 16 July.</i></p>	
		<h2 data-bbox="268 817 1272 860">The National Archives Re-opening Visitor Charter</h2> <p>There has been considerable interest in The National Archives' re-opening. One aspect is that with special measures in place, everyone coming to visit is asked to commit to their new visitor charter. This can be seen at: www.nationalarchives.gov.uk/documents/coronavirus-visitor-charter.pdf.</p> <p>The recent webinar on The National Archives' planning for re-opening was over-subscribed and unfortunately booked up very quickly. However, there is good news for those who were unable to participate - the webinar was recorded and will hopefully be available online soon - details will be circulated in a future bulletin.</p>	
		<h2 data-bbox="268 1330 1197 1413">Dynamic Information for Dynamic Collections Collections Trust Conference 2020 (online)</h2> <p>Save the date: Thursday 1 October 10.00am - 4.00pm</p> <p>This year's Collections Trust conference is going 'virtual' and it will also be free, although donations will be gratefully accepted. The registration page will be launched at the start of September, when the programme and speakers will also be confirmed. Topics include:</p> <ul data-bbox="319 1738 1262 1948" style="list-style-type: none"> • A draft UK framework for museum collections data • Democratising the database • Rethinking disposals • A beginner's guide to AI • Managing born-digital collections • Making it easier to share loans information between lenders and borrowers <p>Many of our Spectrum Partners will also be on hand, ready to answer your questions about collections management software.</p> <p>This is a great opportunity for those of you who wouldn't normally be able to attend our conference, especially our friends around the world, so save the</p>	

[Subscribe](#)
[Past Issues](#)
[Translate ▼](#)
[date and we look forward to you joining us in October.](#)
collectionstrust.org.uk.

Introduction to Ticketing for Museums

A guide in how to introduce a timed entry booking operation

One of ACE's Tech Champions, Nick Kime, has produced (in consultation with the South West & London Museum Development representatives) a useful intro resource to provide guidance for museums and galleries in how to introduce a timed ticketing operation to comply with the latest government guidance to reopening.

The guide covers topics such as:

- Free to use ticketing platform recommendations
- Website integration and accessibility
- Managing visitor capacity numbers
- NHS Test & Trace data capture and storage
- Ticketing solution examples in the museum & gallery sectors

[Download a PDF copy of the guide here.](#)

EMBED – Reopening Recommendation Guidance

The guidance has been created to support organisations in their decision making prior to reopening following Covid-19 lockdown. It considers potential barriers faced by disabled visitors and customers and offers solution based guidance for organisations of all types with the ultimate aim of keeping stakeholders, staff, volunteers visitors, students or customers as safe as possible. The guidance has been put together by EMBED and DCN in collaboration with the University of East Anglia to support disabled and neurodivergent visitors and customers in the post-lockdown society.

The guidance supports all museums and heritage organisations in offering practical, action-based recommendations. These recommendations and actions follow current research and guidance with a focus on accessibility to ensure that the organisation can be accessible and reflective to visitors and workforce needs.

Full details at: embed.org.uk/covid-19-reopening.

MDY Recovery Funding Grant Scheme - Out Now

Thanks to the Art Fund and Arts Council England we are able to launch a new recovery grant scheme designed to reach parts that other funds cannot.

MDY'S Recovery Grant Scheme has awards of £3K - 10K to support museums recover well from this crisis. We have at least £35,000 of grants to distribute and the application form will be open until 30 September with one assessment round after all bids are in. After this, the team will be wrapping cool towels around their heads and working out which museums will benefit most from this investment.

[Subscribe](#)[Past Issues](#)[Translate ▼](#)

We know that for many museums, reopening is the easy bit (even if it doesn't feel

that way now). Recovering well is going to be a long haul and we want to help make it as successful as possible. We will open the application form by August but our guidance notes are available now at

www.museumdevelopmentyorkshire.org.uk/wp-content/uploads/2020/07/MDY-Recovery-Fund-2020-Grant-Guidance-Issue.pdf.

As always, get in touch if you want to talk your ideas through.

Job Opportunities

Yorkshire Visual Arts Network (YVAN) Two freelance roles:

1. Research Learning and Evidence Lead
2. Cultural Co-Producer

Fee for each: £6,100 inclusive of VAT

Research, Learning and Evidence Lead:

The purpose of the RLE Lead is to establish a research framework with research questions and priority objectives that are relevant to the artist and artist-led sector. Through robust relationships with the HEI sector and evidence collection from across YVAN's programmes, this post will ensure that learning, knowledge and narrative is produced that is valued and impactful on the artist and artist-led network to inform and shape practice, makes visible the contribution of the artist (in addition to the arts institutional sector) to wider society, and produce data to feed into policy development through the CVAN national network.

Cultural Co-Producer:

The purpose of the CCP post is to bring research to life, to make it real for the practising artists and to generate opportunities for live action research to feed back into the research framework. This will also enable the region's artistic networks to have meaningful dialogue with future clients and decision & policy makers and explore how practice can be embedded in research.

Find out more at: www.yvan.org.uk/resources/opportunities.

Deadline: 5.00pm on 10 August.

Your Week Ahead

Elevenes Will Return in September!

We've been delighted on how well our Elevenes session has been received but we all

[Subscribe](#)
[Past Issues](#)

need a break! In the meantime we're working on an exciting programme of guest speakers for the return of Elevenses in September!

[Translate ▼](#)


Collections Trust Coffee Time

Wed 5 August, 11.00am -11.45am

Join our weekly online get-together to chat about a museum topic over your elevenses. The theme for this week is currently tbc. Please email events@collectionstrust.org.uk.

Join in at:

collectionstrust.org.uk/events/nationwide-event-listings/collections-trust-coffee-time-17.

Your Lockdown Initiatives

Adapting to New Ways of Working

We would really like to hear how other museums are evolving during the current crisis, your projects will provide ideas and inspiration to everyone!

Send your features to: lily.wilks@ymt.org.uk.

Your Wellbeing

Share Your Resources!

[Subscribe](#)
[Past Issues](#)
[Translate ▼](#)

During this time it is more important than ever that you focus on your own wellbeing.

Each week we will look at ways to support you.

If you come across resources that help you and would like to share with others, please send them to Liz Denton liz.denton@ymt.org.uk.

Creative Well: A self-care programme for culture, health and wellbeing practitioners based in Yorkshire and Humber

Starting Thur 10 September

Applications close Mon 3 August

Are any of these familiar:

- having conversations with people experiencing distress or difficult emotions
- feeling your work is not valued, affecting your feelings of self-worth
- lone working and isolation in organisational settings
- dealing with feast and famine in the 'gig economy'
- struggles with emotional labour, sense of responsibility and boundaries?

These are commonly reported issues that come up for culture and health professionals and of course there are many more. Based on the needs expressed by the particular cohort of participants this programme will offer a whole body and mind approach to practitioner self-care. Participants will be encouraged to be reflective in their learning and will be asked to share their learning with CHWA and other peers so that we can shape any potential future programmes and provision.

The programme starts on Thursday 10 September and runs Thursdays 24 September, 15 October, 5 November, 2.00pm - 5.00pm. There will be a final sharing event on Thursday 19 November, 2.00pm - 3.30pm (TBC).

Full details at:

www.culturehealthandwellbeing.org.uk/news/general-news/creative-well-self-care-programme-culture-health-and-wellbeing-practitioners.

Funding Opportunities

Art Fund's Respond and Reimagine Grants

Deadline: 17 August

The Art Fund has released information on their new stream of funding, 'Respond and Reimagine grants'. These new grants aim to help museums, galleries and cultural organisations respond to immediate challenges connected to the Covid-19 crisis, and offer support to adapt and reimagine ways of working for the future.

[Subscribe](#)
[Past Issues](#)
[Translate ▼](#)

The second round of the Respond and reimagine grants offer funding from £10,000 to £50,000. These grants can provide practical support to fund what you need now. This

could relate to costs connected to re-opening, such as staffing, equipment or training, or planning for future activities. The Art Fund want you to tell them what will be most helpful to you.

For further information about these grants, including who can apply and what they will fund, please visit: www.artfund.org/supporting-museums/programmes/respond-and-reimagine-grants.

MDY Small Development Grant Scheme - Paused Due to Popular Demand

Who knew that sticky tape and sanitiser would be so popular?

We responded to demand, created 'Escaping Lockdown' grants and the money has now liberated many miles of social distancing signage, contactless ticketing systems and hand sanitiser into your museums. So much so, we rattled the budget tin and found coppers left at the bottom.

So, our Small Development Grant scheme and the Escaping Lockdown Grants are now paused.

We are searching behind our sofa cushions to find some more money. Any partial applications will be kept warm and dry to be completed at a later date. If we are able to reallocate some money then we will reopen the scheme.

Your Development

Coronavirus Conversations: Free Webinars for MA Members

Rethinking Museum Learning and Engagement 12 August, 3.00pm - 4.00pm

Join Dhikshana Pering, Head of Engagement and Skills, Somerset House, and MA Board Member, in a panel discussion with Nia Williams, Director of Learning and Engagement, Amgueddfa Cymru – National Museum Wales, Claire McDade, Project Manager: Skylark IX Recovery Project, Dianna Djokey, Communities Curator, John Hansard Gallery and MA Board Member, and Jude Holland, Learning Manager, Barnsley Museums and MA England: North rep, addressing how the sector might approach a radical rethink of how we offer learning and engagement opportunities as museums reopen to visitors.

The Future of Civic Museums 26 August, 3.00pm - 4.00pm

Join Sharon Heal, Director, Museums Association, in a panel discussion with Reyahn King, Chief Executive Officer, York Museum Trust, Duncan Dornan, Head of Museums and Collections, Glasgow Life, and Iain Watson, Director, Tyne & Wear Archives &

[Subscribe](#)[Past Issues](#)[Translate ▼](#)

Museums, about what the future holds for civic museums, who they are for and how they can survive the ongoing funding crisis, which has been heightened by the Covid-19 pandemic.

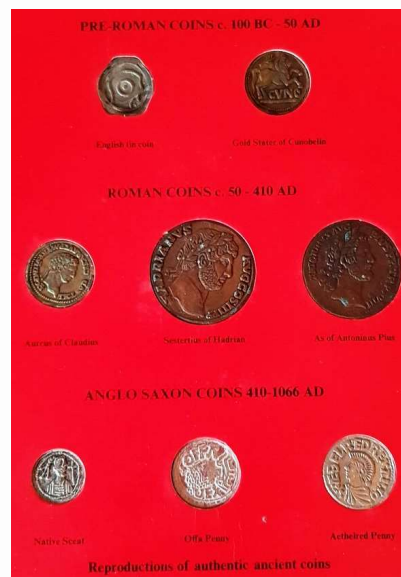
Find out more at: www.museumsassociation.org/events.

Collectors' and Curators' Curios

A Very Rare Roman Coin Encounter?

When working at my first museum as assistant curator, responsibilities included dealing with all public enquiries. Inevitably this included numismatics and I needed to develop a familiarity with Seaby's coin catalogues. One surprising and exciting query was for a Roman coin which I knew from my undergraduate studies to be extremely rare as it commemorated Hadrian's conquest of northern Britain and was the first to feature the figure of Britannia, which became a prominent feature on British coinage until 2008.

This was a copper alloy as issued by the Emperor Hadrian with Britannia on the obverse dating from AD 117-138. Repeated enquiries made me suspicious until I found out that replicas of this coin had been issued as part of a set of 'Coins of Ancient Britain' issued for promotional purposes by Robinson's barley water in the 1960/early 1970s. After a few years lying in the ground or in a shed they looked quite convincingly old to the un-tutored eye. They are probably still turning up to-day and there may still be treasure hunters who are disappointed when their 'treasure' is revealed to be a twentieth century replica produced by a soft drinks manufacturer.



Photograph: Ian Timothy Franklin Twitter

Do you have any similar stories about museum or other collecting which you would like to share with colleagues through the Enewsletter? If so, drop me a line at Dieter.Hopkin@ymt.co.uk.

And Relax...!

We all need an opportunity to smile, at this time, or a chance to share great ideas to help us ...relax!

Lily is encouraging you all to send her any great resources or tips that are helping you, email: lily.wilks@ymt.org.uk.

Subscribe

Past Issues

Translate ▼

- I might be mean but I cannot stop laughing at this video of Tucker playing whack-a-mole with a hotdog (includes other doggy adorableness).

www.facebook.com/tuckerbudzyn/videos/633390317226136/?extid=370Ckx4ESi8GVZOQ&d=n.

Previously...

In case you missed it...

Just in case you missed them first time round, we're listing below snippets of some of the articles published in previous ebulletins that we think you might still find useful:

Reopening Resources:

- **Audience Agency 'Bounce Forward' Events**
www.theaudienceagency.org/bounce-forwards-events.
- **'Don't Forget the Toilets' Webinar**
youtu.be/zqyufcsJhyk.
- **Museum Reopening Guidance:**
 - National Museum Directors' Council (NMDc) good practice guide on reopening Museums.
www.nationalmuseums.org.uk/coronavirus-update/nmdc-good-practice-guidelines-opening-museums.
 - AIM and Museum Development Network 'Reopening Checklist'
www.aim-museums.co.uk/museum-reopening-guidance-checklist.
 - Visit Britain consumer mark, 'We're Good To Go'.
www.visitbritain.org/business-advice/were-good-go-industry-standard.
- **Reopening Toolkit from South East Museum Development**
southeastmuseums.org/resource-library/advice-on-reopening-museums-reopening-museums-toolkit.
- **Timed Ticketing - Quick Guide**
[Download a PDF copy of the guide](#).

Other Previous Articles:

- **Arts Council National Lottery Project Grants**
www.artscouncil.org.uk/projectgrants
- **Action for Happiness Coping Calendars**
www.actionforhappiness.org/coping-calendar.

Subscribe	Past Issues	Translate ▼
-----------	-------------	-------------

- **Coronavirus Business Support Finder Tool**
www.gov.uk/business-coronavirus-support-finder.
- **Financial Difficulties Toolkit**
www.artscouncil.org.uk/publication/managing-financial-difficulties-guide-and-toolkit.
- **Government Guidance on Mental Health and Wellbeing During COVID-19 Crisis**
www.gov.uk/government/publications/covid-19-guidance-for-the-public-on-mental-health-and-wellbeing.
- **Homeworking Health Check Advice Sheets**
[Dealing with eye strain and headaches whilst working from home during self-isolation](#).
[Helping you prevent aches and pains when working from home](#)
- **IPR and Volunteers - NEW MDY Advice Sheets Published**
www.museumdevelopmentyorkshire.org.uk/2020/05/14/new-ipr-guidance-sheets-published.
- **Let's Talk Loneliness Campaign**
letstalkloneliness.co.uk.
- **MDY Bid Writing Support for Non-NPO Museums**
[Expression of interest form](#).
- **Mental Health - Directory of Online Courses**
www.futurelearn.com/courses/collections/support-mental-health-in-lockdown
- **Museum Detox - network for museum and heritage workers who identify as of colour**
www.museumdetox.org.
- **Museum Wellness Network: supporting staff wellbeing post-lockdown:**
www.museumsassociation.org/museum-practice/08062020-supporting-museum-workforce-wellbeing-post-lockdown.

Contacts

The Museum Development Yorkshire Team

Michael Turnpenny

Head of Museum Development

Email: michael.turnpenny@ymt.org.uk

Tel: 07917 220227

Alan Bentley

[Subscribe](#)[Past Issues](#)[Translate ▼](#)

Museum Development Officer (West Yorkshire, Harrogate and Craven)
Email: shirley@ymt.org.uk
Tel: 07595 609782

Liz Denton

Museum Development Officer (East Riding of Yorkshire and Northern Lincolnshire)
Email: liz.denton@ymt.org.uk
Tel: 07785 458220

Dieter Hopkin

Museum Development Officer (Moors and Coast, Dales and York)
Email: dieter.hopkin@ymt.org.uk
Tel: 07970 977217

Joanne Bartholomew

Museum Development Officer
Email: Joanne.Bartholomew@ymt.org.uk
Tel: 07730 642919

Helen Thornton

Regional Accreditation Advisor (Yorkshire)
Email: accreditation@ymt.org.uk

Lily Wilks

Museum Development Yorkshire Intern
Email: MDYOffice@ymt.org.uk
Tel: 07544 394541

Ali Glew

MDY Ebulletin Editor
Email: mdy-bulletin@ymt.org.uk
Tel: 0773 258 5959



If you have any comments about this e-bulletin or would like to contribute a news item, event or job vacancy, please email: mdy-bulletin@ymt.org.uk.

Visit the MDY website at: www.museumdevelopmentyorkshire.org.uk



Supported using public funding by

**ARTS COUNCIL
ENGLAND**

Copyright © 2020 Museum Development Yorkshire, All rights reserved.

Want to change how you receive these emails?
You can [update your preferences](#) or [unsubscribe from this list](#).

Subscribe	Past Issues		Translate ▼
---------------------------	-----------------------------	--	-----------------------------

This email was sent to <<Email Address>>
[why did I get this?](#) [unsubscribe from this list](#) [update subscription preferences](#)
Museum Development Yorkshire · St. Mary's Lodge, · Marygate, · York, YO30 7DR · United Kingdom

